



4-Way Today



www.rotarydistrict6460.org

That Was Easy!

After returning from the mailbox today, I wondered if I was the richest person on the block since I had six envelopes from organizations wanting me to contribute to their specific need. Then I realized that everyone on the block got the same six envelopes. There are so many causes it is difficult to focus on any special need and there are only so many spare dollars.

Why contribute? This question must be answered first, and Rotarians have answered this question many times. We all realize that we will eventually leave our lives with as much cash in our pocket as we had when we entered our lives, so we recognize we should be good stewards of our resources. Since this is the case, and we are Rotarians, it makes sense that our focus should be on Rotary.

The following is reported by RI to help answer the question why contribute.

“Three years ago, while studying documentary filmmaking in Spain, Rotary Foundation Ambassadorial Scholar Alissa Creamer turned her camera on a project supported by 60 Spanish Rotary clubs.

The result is a documentary film about two children who received prosthetic legs at a hospital where Rotarians are supporting the rehabilitation of child land mine victims.

Give at least US\$100 to the Annual Programs Fund through the Every Rotarian, Every Year initiative, and uphold your commitment to Rotary service by supporting the efforts of Rotarians like Alissa.

“I am confident that through my work, I’m demonstrating a commitment to Rotary’s ideals.” — Alissa Creamer, member of the Rotary Club of Portland Metropolitan, Oregon, USA”

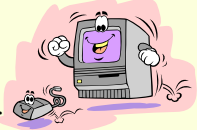
There are many ways to contribute to Rotary programs and one of the easiest is to go to your computer and open your web browser. Go to www.rotary.org. Then click on Member Access. If you have



Easy, page 4

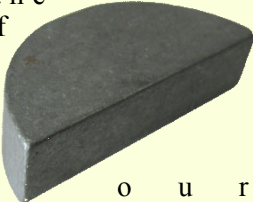
From the Desktop

by Larry Thompson,
6460 District Governor



Rotary International President John Kenny in his monthly letter to Rotarians says, “The idea of the family of Rotary is a simple one, and one that we celebrate every December during Family Month. Every Rotarian is part of the **Rotary family** – but our family is much larger than just our 1.2 million members. The family of Rotary includes every one of the men, women, and children who are involved in our work: the spouses and children of our members, our Rotary Foundation program participants and alumni, and all of those who are part of our programs, in the tens of thousands of Rotary communities around the world.”

There are several ways we can celebrate the importance of family as Rotarians. I soon learned in my experience visiting clubs in our District, that where a Rotary sign is displayed as you enter a city or town, you have several friends in that city or town you will soon meet. Rotarians share a lot in common and, as a result, are part of the family of Rotary. When you travel, take along a flag from your home club and take the opportunity to visit a Rotary club in the city or town you are visiting. Each time you will recognize the agenda as clubs



Desktop, page 4

District Governor's Official Visits

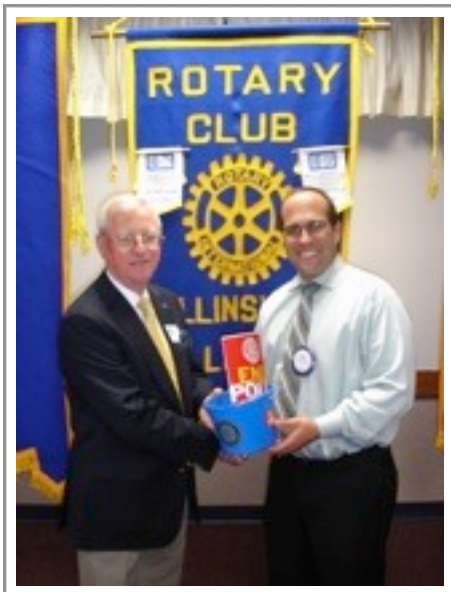
AUGUST 24, 2009

On Monday afternoon it came time for my official visit to my home club, the **Rotary Club of Alton-Godfrey**. They actually stood when I was introduced by club president **Ford Phillips** as the District Governor. I started my presentation by reading the scripture verse from Mark 6:4 "Jesus said to them, "Only in his hometown, among his relatives and in his own house is a prophet without honor." and then proceeded without commenting on the verse. It turned out that no one took offense at me being District Governor and as witnessed at the recent District Conference, my club is very proud to be the home club of a District Governor. Thank you **Rotary Club of Alton-Godfrey**.



AUGUST 25, 2009

This Tuesday was my visit to the **Rotary Club of Collinsville**. This is the home club of PDG Ken Buel. The club is under the leadership of president, **Bruce Cope** who is leading the Collinsville club's membership growth. The club meets in a new location at the Knights of Columbus facilities on Route 157. There meeting room is spacious and the food is great which will encourage membership



growth. The club has set a goal of 10 new members by June 30, 2009. In a recent email, **Bruce Cope** reports the club has added **six** new members already!

AUGUST 26, 2009

On Wednesday my visit was to the **Rotary Club of Pekin**. This club meets in an indoor sports facility called the Dragons Dome on the east side of Pekin. When you visit this club be ready for a great lunch. Club president **Chuck Lauss** started the year as fire chief of the city of Pekin and is now working for Caterpillar. The **Rotary Club of Pekin** is involved in many community projects including the Marigold Festival in September.



AUGUST 27, 2009

On Thursday, I drove to our neighbors in East Alton for my official visit the the home club of District Secretary **Lori Palmer**, the **Rotary Club of East Alton**. Club President **Kevin Stuby** has the club moving forward with steady membership growth and the club's many excellent service projects including their unique scholarship program. Each year the club interviews students and awards two scholarships for students planning to attend a community college or trade school. During my visit, the club was seeking volunteers to help with the 16th annual Soap Box Derby.



AUGUST 28, 2009

The final August visit was on Friday at noon in Jacksonville, IL where the **Rotary Club of Jacksonville** meets at

Hamilton's Catering Banquet Center. This club is the home club of seven Past District Governors the most recent being PDG **Keith Lape**. Club



president **Helen Downey** is leading this club through their 91st year. This is a singing club and **Melissa Pantier** is a talented song leader. As you drive through Jacksonville past the city park, you would notice a Ferris Wheel with a Rotary emblem at the center. This Ferris

Wheel (Big Eli NO. 17) is operated by the **Rotary Club of Jacksonville** as a service to the community.

AUGUST 29, 2009

On this Saturday, Judy and I drove to Bushnell for my second visit and our first experience with the Bushnell Radio Days.

Lois and Ken McClintock along with many other club members organize the programming for the days during the Bushnell Fall Festival. Judy



and I along with Assistant Governor John Vigezzi were interviewed by Lois and Ken discussing the role of the District and programs of Rotary International.

Yes, West Virginia, there is a Santa Claus

Dear Santa and his Elves,

I am truly amazed by this wonderful organization in Highland, Illinois. They keep helping this little country school in West Virginia. This Rotary group contacted me (the principal) just shortly after I started at this school, asking me if they could help out with literacy. I said, "Absolutely! We need our accelerated reader program put in place for the students." You know, Santa, they helped out so much last year, even visiting our little school and bringing us wonderful gifts.

Crichton's students are now working on AR daily. I gave out our first "High AR Points - Beanie Babies" yesterday. The students were so excited to hear their names called over the intercom. Santa, you and the elves would be amazed to see the kids reading. They love to stop me in the hall and say, "Ms. B. I just passed another quiz." Parents are involved in sending home leveled readers nightly for us. I am truly grateful to this wonderful organization who has helped to make a difference in the lives of these country kids.

Santa, this year, I received another call from Mr. Steiner. He asked me how things were going and if there was anything that we needed. I had just had another conversation with the music teacher about our Christmas program. Santa, the Christmas program is so cute, and yes, you are the star. She wanted to let me know that the kids would be standing in the bleachers again this year, because we didn't have any risers. I told her that we were trying, but money was tight for related arts. She understood, but handed me another copy of her request, just in case. Then, Mr. Steiner calls...I was amazed at the timing. I bet you had something to do with it?? The Rotary is going to buy us risers, the flip-flop kind that will be so useful for related arts. Santa, I am truly humbled by their generosity.

I will close this letter now. I am sure you are busy this time of the year, but you needed to know that there are other "Santas" out there taking care of the kids. Yes, West Virginia, there is a Santa Claus - with a home base in Highland, Illinois.



Thank you from the Crichton Wildcats,
Patti Burdette
Principal, Crichton Elementary, Quinwood, WV

Desktop

Easy

throughout the Rotary world are focused on the same objectives. Exchange your flag with the club and bring their flag back to your home club. Clubs should purchase (or make) a large banner (eventually several) to display these flags. The visual display in your club meetings shows the many communities of the **Rotary family**.

Second, we must recognize the importance of priorities and place our family first. Each of our lives are filled with activities and opportunities. While Rotary observes the importance of attendance in making a club successful, Rotary is also wise to suggest members put family first. If this means missing a club meeting then do so and makeup your attendance by participating in a club committee meeting, club project, district meeting, or Rotary International meeting. Another great way to experience Rotary is to visit other clubs and return to your home club with a makeup card.

Some time ago, a fellow club member, Dave Walker, had an experience that I use often to illustrate the value of the **Rotary family**. His brother and sister in law were on a cruise near Malaysia when Dave’s sister in law became ill. She needed hospital care and both were put ashore in Malaysia. When Dave received a call from his brother, he wanted to help in some way and then realized that Rotary International probably had a club in this city in Malaysia. He went online to discover the name of the club, the contact information and emailed the president of the local Rotary club. The local president and his wife then visited Dave’s brother and sister in law at the hospital several times offering them assistance with the language and other needs. Dave’s brother and sister in law had to remain in Malaysia for two months convalescing and while there were invited to attend the local Rotary Club meetings which met in the same hotel.

Enjoy this holiday season.

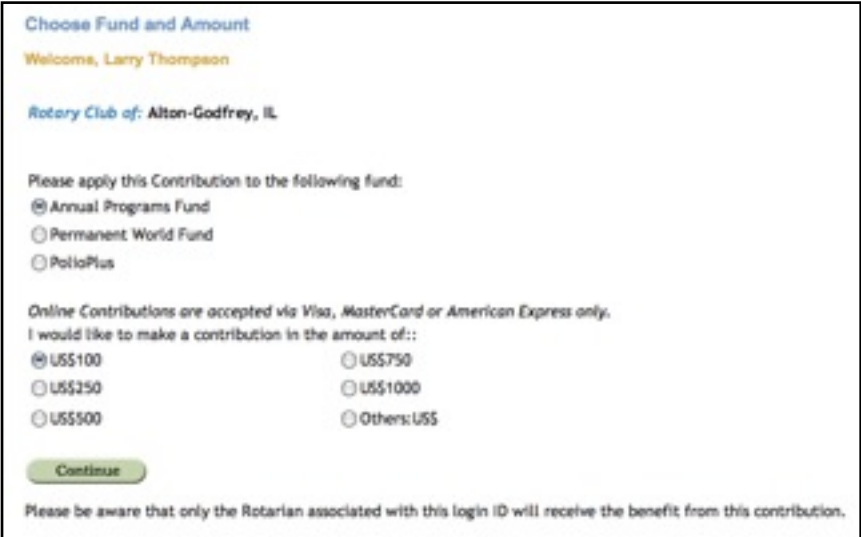
logged on as a member previously, then you enter your email address and enter your password. If not, you enter your email address and wait for a short time until Rotary International sends you a temporary password. When you receive the temporary password, log in and change your password to your favorite online password you typically use and remember.

After you are logged in to Member Access, click on “Contribute to The Rotary Foundation”. At this point you can select your options.

Since our District received 50% of your



contribution to use locally at the District level or with District Simplified Grants, you are encouraged to select the Annual Fund. Your next selection will be the amount of your contribution.



At this point, you click on Continue and enter your credit card information. As you can see, I have just made a contribution to our Rotary Foundation and I did this on **Cyber Monday** (the Monday after Thanksgiving). Happy Holidays. That was Easy!

Larry Thompson,
6460 District Governor



Pics From District 6460 Conference



Alex Schenk & Caroline Thompson
Alton-Godfrey Interact Kids



District Interact Clubs and Inbound/Outbound students meet at the District Conference



WIU Professor Fetene Gebrewold and daughter, Lydia



Terri Fitch, RI President's Rep and District Trainer Tony Williams



Michele Olsen, DGN Gordon Jumper, PDG Fred Osborne, PDG Keith Lape, PDG Ron Riggins, PDG Chuck Farrar, DGD Suzanne Ellerbrock, PDG Ken Buel, Gary Olsen, DGE Dave Parsons, Mike Schneider, DG Larry Thompson



District Leaders Give \$100 to Fund a Shelter Box

Corridor 67 Panel - IDOT Rep. Frank Opfer, Don Miller, Moderator Dick Rawlings, Senator Deanna Demuzio, Rep. Jim Watson, Rep. Rich Myers, Gordon Jumper



Keynote
John O'Leary



Tom Logan
Marion Medical Missions

USA, PUERTO RICO and US VIRGIN ISLANDS ROTARY CLUBS AND DISTRICTS AND THE IRS

From Club and District Support - Pan America Department
Rotary International, 1560 Sherman Avenue, Evanston, Illinois 60201 USA
Telephone: (847)-866-3000; Fax: (847)-866-3072

What follows is not tax advice, but general information, which may be useful. Questions regarding any tax matters need to be referred to local counsel, your tax adviser or to the IRS. (<http://www.irs.ustreas.gov> or 1-800-829-1040)

On 13 May 1958, the Internal Revenue Service declared that Rotary International (RI) and its clubs and districts are entitled to exemption from federal income tax under **Section 501(c)(4)** of the Internal Revenue Code. While Rotary districts and clubs are exempt from paying *federal income tax*, the law does require Rotary clubs and districts to file an annual information return on **IRS Form 990**, on or before the 15th day of the 5th month following the close of the annual accounting period (15 November). Certain organizations, other than private foundations, that do not normally receive more than \$25,000 in gross receipts in each taxable year are not required to file Form 990.

Starting in 2008, clubs or districts with gross receipts of \$25,000 or less were required to file Form 990-N, which is an electronic e-Postcard report. This report is required annually. Failure to meet the annual filing requirement for three consecutive years will result in **revocation of the tax-exempt status of the club or district** in question. To learn more about this requirement, and to obtain the necessary e-Postcard report form, visit the US Treasury website at: www.irs.gov/eo, or call the toll-free number: (877) 829-5500.

Numbers: RI's **Group Exemption Number** (referred to as "GEN" on Form 990), is **0573**, which applies to RI as well as all USA, Puerto Rico and Virgin Islands clubs and districts. At the same time, every club and district in the USA, Puerto Rico and Virgin Islands is required to have its own **Employer Identification Number (EIN)**. This 9-digit number is essentially a tax ID number, and has nothing to do with whether the club or district has any employees. As RI must report annually the EINs of all districts and clubs in the USA, Puerto Rico and Virgin Islands, the RI secretariat maintains a list of those EIN tax numbers for reference. New Rotary Clubs, however, must apply directly to the IRS for an EIN number to be assigned to the new Rotary club. Please contact your Club and District Support (CDS) representative at Rotary International headquarters if you have any questions about the EIN number for your club or district.

Tax Deductible Status: Contributions to clubs and districts are generally not tax deductible as charitable contributions. Clubs and districts that have gross annual receipts that normally exceed \$100,000 generally must include a disclosure statement regarding the non-deductibility of contributions during fundraising solicitations (IRC Sec. 6113). Note that this includes invoices *for payment of dues*. See **IRS Notice 88-120** for more details and acceptable disclosure language. Contributions to any club or district charitable fund that has obtained tax exemption under **Section 501(c)(3)** of the Internal Revenue Code may be tax deductible as charitable contributions. Membership dues may be deductible for some Rotarians as business expenses.

Other Taxes: Clubs or districts may be required to file **IRS Form 990-T** if they have "*unrelated business income*." An unrelated trade or business is defined as any trade or business that is regularly carried on, and that is not substantially related to the organization's exempt purpose or function. (IRC Sec. 513). Federal Social Security and withholding taxes, and local state income taxes may be required from a club or district that has one or more paid employees. Please contact the IRS or your tax consultant or attorney for guidance on this issue.

The laws of individual states vary in regard to state income tax, sales tax, other taxes and special licenses. The 501(c)(4) status applies only to federal income tax and does not necessarily have any bearing on state or local taxes. IRS interpretation of its Code also can vary slightly in different US Treasury districts.

October 2009

Calendar for Rotary District 6460

2009

DATE	EVENT	LOCATION	WHO ATTENDS
December 31, 2009	New Club Officer Contact Information Due		

2010

January 14 -16	Central States Rotary Youth Exchange Board Meeting	Schaumburg, IL	CSYE Committee, DG, DGE, DGN and Spouses
January 17 - 24	International Assembly	San Diego, CA	DGEs and Spouses
January 30	President's Summit, Pre-PETS and College of Governors Luncheon	Crowne Plaza Hotel, Springfield	Current Club Presidents and Presidents Elect, AG's, District Training Team, PDGs
February 20	District Team Training Seminar	Crown Plaza Hotel Springfield	District Leadership Team, AGs, District Officers, District Training Team
March 12 & 13	Land of Lincoln PETS	Effingham, IL	Club Presidents Elect, District Training Team, DGE, DGN, DG and PDGs, Spouses
April 10	District Assembly Membership Seminar Foundation Seminar Youth Seminar	Crowne Plaza Hotel, Springfield	Club President Elect, Club Officers, Club Committee Chairs, AGs, District Training Team & all Rotarians
April 16-18	RYLA	Bradley University Peoria	High School Students
June 20 – 23	RI Convention	Montreal, Canada	All Rotarians and Spouses
June 26	District Governor Installation	Crowne Plaza Hotel, Springfield	All Rotarians and Spouses
July 8-11	Central States Youth Exchange Summer Conference	Grand Rapids, MI	CSYE Outbound, Inbound, Rebound, Parents, DG, DGE
August 24-26	GETS, GNATS District Trainer Training Seminar	Nashville, TN	DGE, DGN, District Trainer and Spouses
August 26-28	Zone Institute	Nashville, TN	PDGs, DG, DGE, DGN and Spouses
October 29-30	District Conference And District Leadership Seminar	Hilton Springfield Hotel	All Rotarians and Spouses

2011

January 16 - 23	International Assembly	San Diego, CA	DGEs and Spouses
January 29	President's Summit, Pre-PETS and College of Governors Luncheon	Crowne Plaza Hotel, Springfield	Current Club Presidents and Presidents Elect, AG's, District Training Team, PDGs
May 21-25, 2011	Rotary International Convention	New Orleans, LA	All Rotarians and spouses

Rotary District 6460

Membership & Attendance - October, 2009



Rotary Club of...	Attendance			Membership			Start of Year	Present	Change
	Meetings Held	This Month	Rank	Year to Date	Rank	%			
	#	%		%					
Abingdon	4 of 4	64.00	28	73.50	13	26	22	-4	
Aledo	5 of 5	90.00	3	92.49	1	6	6	0	
Alton-Godfrey	4 of 4	65.90	24	61.58	33	100	96	-4	
Benld	3 of 4	39.00	47	36.00	48	26	26	0	
Bethalto	4 of 4	75.00	10	72.75	15	39	36	-3	
Bushnell	3 of 4	61.00	33	73.50	13	24	25	1	
Cambridge	4 of 4	69.00	15	74.63	10	22	22	0	
Canton	4 of 4	67.00	22	74.50	11	39	39	0	
Carlinville	4 of 4	67.00	22	67.75	23	36	42	6	
Chillicothe	no report					18	18	0	
Collinsville	4 of 4	57.00	39	59.00	35	25	30	5	
Delavan	4 of 4	75.00	10	63.00	30	13	13	0	
East Alton	5 of 5	70.00	14	66.47	25	32	33	1	
East Peoria	4 of 4	36.96	48	48.14	45	45	46	1	
Edwardsville	5 of 5	77.27	7	75.20	9	130	127	-3	
Farmington	4 of 4	48.00	45	49.08	44	34	37	3	
Galesburg	5 of 5	68.33	17	69.07	20	86	84	-2	
Galesburg Sunrise	4 of 4	75.00	10	75.50	8	38	38	0	
Galva	4 of 4	52.00	43	53.00	41	12	12	0	
Granite City	4 of 4	68.18	18	64.58	28	51	52	1	
Havana	4 of 4	54.80	42	68.40	22	32	31	-1	
Highland	4 of 4	81.97	5	77.57	7	74	75	1	
Jacksonville	5 of 5	55.82	40	57.39	37	111	114	3	
Jacksonville Sunrise	4 of 4	68.00	19	69.75	19	14	13	-1	
Jerseyville	3 of 4	61.00	33	50.75	43	42	43	1	
Kewanee	4 of 4	73.20	13	70.90	17	47	47	0	
Land of Goshen	4 of 4	75.26	9	73.54	12	76	75	-1	
Macomb	4 of 4	64.00	28	61.50	34	89	89	0	
Macomb Centennial Morning	5 of 5	91.00	2	86.50	2	36	37	1	
Manito-Forest City	4 of 4	55.00	41	57.25	38	27	29	2	
Mason City	4 of 4	63.33	30	66.02	27	14	15	1	
Monmouth	4 of 4	57.32	38	56.29	40	78	82	4	
Morton	5 of 5	65.57	26	66.99	24	115	119	4	
Pekin	4 of 4	77.00	8	80.77	4	53	49	-4	
Peoria	4 of 4	49.00	44	47.00	47	248	246	-2	
Peoria North	5 of 5	59.49	35	56.69	39	181	176	-5	
Peoria Sunrise	5 of 5	82.00	4	80.67	5	9	10	1	
Petersburg	4 of 4	68.00	19	66.25	26	17	17	0	
Pittsfield	4 of 4	91.50	1	81.25	3	46	45	-1	
Quincy	4 of 4	65.37	27	61.64	32	101	101	0	
Quincy East	4 of 5	61.40	32	63.08	29	22	22	0	
Rushville	5 of 5	67.40	21	70.25	18	28	27	-1	
Silver Creek	new club					20	20	0	
Springfield	4 of 4	63.09	31	62.77	31	88	89	1	
Springfield Midtown	4 of 4	65.60	25	71.24	16	25	25	0	
Springfield South	5 of 5	46.25	46	47.86	46	40	40	0	
Springfield Sunrise	4 of 4	81.00	6	79.50	6	27	29	2	
Springfield Westside	4 of 4	57.50	37	51.27	42	22	20	-2	
Washington	4 of 4	59.00	36	58.25	36	51	51	0	
Wood River	3 of 4	69.00	15	68.75	21	35	32	-3	
				Totals		2570	2572	2	