



4-Way Today



www.rotarydistrict6460.org

Foundation Permanent Fund

PDG Keith R. Lape



Rotarians often and gladly comment on the efforts of The Rotary Foundation to reduce the world issues such as hunger, water projects, Group Study Exchange, Ambassadorial Scholars, etc. These issues and many more have improved the lives of the world population. The projects have benefited people of the world who we, District 6460 Rotarians, will never meet. The benefits are never fully known, but we do believe that the contributions to the Foundation are a

means of providing a “Service Above Self.”

On several different occasions, I have had the opportunity to address the needs that I described above. I have personally seen some of the projects that have been generously funded by the District and many other Rotarians. The visiting GSE teams, the Ambassadorial Scholars, and our own Simplified Grants have had impact on the lives of people in District 6460.

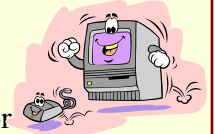
These previous descriptions are addressed by the donations to The Rotary Foundation in the contributions to the Annual Fund. Additionally, contributions can and have been made to the Special Needs Fund, especially to the Polio Plus. The eradication of Polio remains the number one goal of TRF. It will be done! We will succeed!

However, the issues that are often omitted from the discussion are the needs and the benefits of the contribution to the Permanent Fund. Often, Rotarians ask why give to the Permanent Fund and what benefits result from those contributions. Let me attempt to give you three answers to “Why give” and “What benefits” results from your gift.

The Permanent Fund of The Rotary Foundation is the “rock” of the Foundation. Each dollar is retained by The Rotary Foundation, allowing the Annual Fund and Special Needs Fund to operate more effectively. In serving the annual needs of the projects throughout the world and by maintaining the base contributions is the

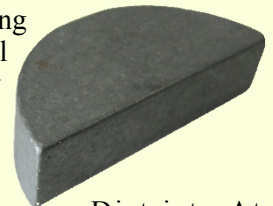
From the Desktop

by Larry Thompson,
6460 District Governor



We have come to the mid-point in the Rotary year as we go through the month of January. It is time to review our club’s goals and make another effort to achieve those goals set last spring. Recently, I received the RI membership report for our district showing a decline of 28 members from the numbers reported on the Spring ’09 semi-annual reports. There are many reasons for our membership numbers to be reduced as we all are experiencing a challenging economy. Many of these challenges are global. But, as we continue through the grey skies of January, we anticipate the brighter, sunnier days of the coming spring and **new members.**

Recently, I attended the winter meeting of the Central States Rotary Youth Exchange organization in Schaumburg, IL,



representing the District. At this meeting, **Nancy Waters of the Rotary Club of Quincy** was appointed to serve as Youth Exchange Chair for District 6460 taking the position held currently by **Richard Morse of the Rotary Club of Springfield Sunrise.** Thank you Richard and thank you Nancy.

February is World Understanding Month and an opportunity to review our club efforts to learn other cultures.

DISTRICT GOVERNOR'S OFFICIAL VISITS

Saving the Best for Last

September 1, 2009

On this Tuesday morning, I drove to Washington, IL for the noon meeting of the **Rotary Club of Washington**. This year, the club is lead by club president **Al Biagini**. The meeting was fun with plenty of good food and clever comments from Al as he proceeded through the agenda. This year the club has set goals to increase the club membership from 54 to 58. The club recently held their end of the year steak fry and Christmas dinner. In this challenging economy, the **Rotary Club of Washington** helped establish a new food pantry at the Washington Evangelical United Methodist Church by providing food packages at Thanksgiving and Christmas.



is challenging the club to increase its membership to 120 members and continue its excellent service to the community and the Rotary Foundation. One of their new community projects for this year is to clean up the bike trail.



September 8, 2009

This Tuesday morning took me to Benld, IL for the noon meeting of the **Rotary Club of Benld**. This club serves the communities of Gillespie, Staunton, and Benld. The club president **Jean Strausbaugh** was on a business trip and the club was not prepared for my visit, but we were able to adjust the presentation. The Coal Country Fall Festival was to occur on the weekend of September 26 with a bike race called Tour de Coal. Members were preparing to work at the festival.



September 9, 2009

Wednesday took me to Pittsfield, IL for the noon meeting of the **Rotary Club of Pittsfield** where club president **Jan Bleich** is enjoying leading this club. Pittsfield is the county seat of Pike county and is the home town of Abraham Lincoln's secretaries, John Hay and John



G. Nicolay. This club is the home club of two past district governors, **Eric Dolbeare** and **Dawson Dean**. One look at the club's website

(www.pittsfieldrotary.com) will show many examples of how this club serves their community and the world. At the meeting I was honored to help induct a new member, **Bill Durall**.

Visits, page 5

September 2, 2009

On Wednesday, I drove to nearby Edwardsville for the noon meeting of the **Rotary Club of Land of Goshen**. This is a relatively new club in District 6460 chartered January 3, 1992. This club



is also one of the sponsors for the District's newest club, the **Rotary Club of Silver Creek**. One question many have is just where is the Land of Goshen. Early settlers of the area traveled from Kentucky across the Ohio River and traveled up the Goshen Road in Illinois to an area of rich soil for both crops and grazing called the Land of Goshen. This area is the Mississippi River bottom land in Madison and St. Clair counties. **Carla Coury** is the club president and is pushing to raise their membership to 77.

September 3, 2009

It was a sunny day when I drove to Morton, IL for the noon meeting of the **Rotary Club of Morton** on Thursday of this same week. I arrived early to setup and place my materials at the tables. Morton is the Pumpkin capital of the world, and the club was busy preparing for the Pumpkin Festival that weekend. Club President **Don Jones**

Hats Off! to Springfield Rotary Clubs for Lincoln Bicentennial Project

by Brian Barstead



BB Jen Jesse photo is of Barstead, artist Jennifer Partlow and White with "In Lincoln's Words"

With the Lincoln bicentennial year drawing to a close the Springfield Rotary Clubs began wrapping up their "Hats Off to Mr. Lincoln" celebration, in November.

In late 2008, the Sunrise, Midtown and Downtown clubs began working on a project to celebrate Lincoln through spearheading a public art project utilizing giant stovepipe hat- shaped fiberglass forms, each hand painted by local artists. The project was inspired by the famous Cows On Parade in Chicago from 1999 and similar public art projects, but it was the first of such things ever attempted in Springfield.

A committee of Rotarians from the three clubs began fundraising to pay for the hats in the fall of 2008 and worked with the Springfield Area Arts Council to put together a group of artists. Designs

were selected by a local panel of area artists during January and February of 2009. Hats were manufactured in Chicago and matched with the selected artists in the spring with an unveiling and installation of the hats around town in late May.

During the summer and fall, you could see large and huge painted hats all over downtown Springfield in front and inside of area businesses and landmarks. The hats and Rotary received a huge amount of publicity during the year and the endeavor added some charm to the festivities and provided some fun for the high number of visitors who came to look for Lincoln this year.

Initially, the clubs planned that the hats would be auctioned off at the end of the fall. Many people wanted the hats to stay permanently, so the committee decided instead to find some locations where the hats could remain in public view, but could be protected better from the elements, with the hope that these might provide people and visitors with a nice reminder of the bicentennial for years to come.

On January 13, Illinois Secretary of State Jesse White stopped by the State Capitol Visitors Center -- just west of the Capitol Building complex in Springfield-- to visit with two of the artists who helped decorate the two hats that are now permanently on display there. While he was there, I told him that profits from the project are going to help local literacy efforts. As Secretary of State, White reminded us that he also serves as the State Librarian and discussed the importance of community endeavors to improve literacy.



Jesse Amy BB photo is of Secretary of State Jesse White, Amy Roberts-Black and Brian Barstead with her creation "RoadTrippin' Through LincolnLand"

Desktop

Rushville's Rotary Literacy Fund

by Walt Stephenson, PP

We now live in a world where exotic seems to have less meaning. When we see video clips from other countries, we see people wearing blue jeans, t-shirts, and baseball caps. In a Youth Exchange meeting, one of the presenters emphasized *“that the difference between cultures is that they are different”*. It remains important for us to understand each other and Rotary programs help.

One of the programs Rotary International has promoted and funded using the Rotary Foundation World Fund is the Group Study Exchange. Recently, **John Power of the Rotary Club of Jacksonville** has accepted the position as chair of the GSE committee. One year ago, our district was paired by RI with District 9110. This district is located in southwest Nigeria. Last April, a GSE team leader from Canada was abducted in a Nigerian city located 400 miles north of this district. After serious review of the situation, John Power and I have decided that we should revive our efforts to send a GSE team to Nigeria this spring. Please offer names of individuals to John Power (johnpower@mchsi.com) who might be interested in traveling to Nigeria for a group study exchange in late May and returning in early June.

District 9110 Governor, Tayo Alabi and I have been in regular contact since last spring and he is very happy our district is organizing a team to visit his district. His district will be sending a team to Illinois in April.

Part of world understanding is being ready and able to help others in need. Most of you know the feeling you get when you are assisted by a stranger. Perhaps you had a flat tire while traveling, or had a fire in your home, or some other calamity, but to be helped by someone you do not know is comforting. On Tuesday, January 12, 2010 after 200 years without an earthquake, a 7.0 magnitude earthquake struck Haiti near the capital of Port-au-Prince. As Rotarians, we want to help and we can go online at www.rotary.org to find numerous ways to provide assistance. Please remember you are the **KEY** to achieving world understanding.



Rushville Rotary Club President Tom Desulis hands Industry Elementary School Reading Teacher Paula Greuel a check for 600 dollars. Industry Elementary normally sponsors three major book fairs in the Reading is Fundamental (RIF) program each year. The fairs bring students, teachers and parents together in an atmosphere that promotes reading and guarantees each student at least one book to take home and keep. This year, changes in federal funding eligibility criteria forced the school to scale the program back to just two fairs. The Rushville Rotary Club, a regular supporter of the RIF Program, obtained a 600 dollar grant from Rotary District 6460 to fund the third fair.



Visits

September 22, 2009

On this Tuesday I drove to nearby Granite City for the noon meeting of the **Rotary Club of Granite City**. The club president this year is **Jim Hudson**. Granite City is one of the clubs in our district that always participates in youth exchange and their exchange student, **Christa Alessandri** had just arrived and was attending her first Rotary meeting in Granite City. The club has plans to participate in the community cleaning graffiti and provide assistance to the Phoenix Crisis Center. The club started the year with 49 members and has set a goal to reach 55 by June 30, 2010.



September 29, 2009



Several clubs in the district meet on Tuesday noon making it difficult to complete the official club visits before October. On this Tuesday, I drove to nearby Highland to visit the **Rotary Club of Highland**. The district has many outstanding Rotary Clubs and certainly this club is on the list. Club President **Jennifer Whitten** is continuing the success

of the club by introducing new and fun ideas while promoting successful projects of the past. This club has partnered with a school in Appalachia, Crichton Elementary in Quinwood, West Virginia. Recently the club collected sports gear, stuffed animals, dictionaries, and art supplies to be used in a literacy project in the school. The **Rotary Club of Highland** is a sponsor of the new **Rotary Club of Silver Creek**.

October 30, 2009

My plan was to complete my club visits by the end of September, but due to the diligent effort of **Holli Martin, Jennifer Whitten, and James Kemper** of the **Rotary Club of Highland** and **Carla Coury** and members of the **Rotary Club of Land of Goshen** a new club was organized in Troy, IL, the **Rotary Club of Silver Creek**. Silver Creek is a small stream that flows into Silver Lake west of Highland and north of Troy and there is a stream bed that connects Troy to Marine. The club plans to draw members from both towns. Troy is a growing area along I-70/I-55 with many truck stops and shipping terminals. I had visited the new club several times before my official visit on this Friday. Club president **Brian Jones** and club secretary **Barbara Bean** lead a very enthusiastic young group interested in promoting the 4-Way Test and the Object of Rotary. In my comments, I suggested that while The **Rotary Club of Canton** is celebrating their 90th anniversary this year, probably no one in the charter group in Canton in 1919 considered the 90th anniversary and the impact 90 years of service has had on that community. Each time we begin a new club, we can anticipate such service through many years. The **Rotary Club of Silver Creek Area (Troy)** charter date is January 12, 2010.



Foundation

Permanent Fund and using only part of the earnings from the Permanent Fund, The Rotary Foundation is often regarded as a premiere Foundation, “doing good in the world.”



Why give:

1. Often it is identified that 50% of the Americans do not take time or have the desire to develop the basic plan for the management of their property. About 50% of the estates in the US do not have outline plans for the disbursement of their assets.
2. Placing funds in the Permanent Fund of The Rotary Foundation sustains Rotary's programs. The original gift is retained, and only the incomes are allocated for use. The earnings may be designated to a specific individual purpose or use in a specific program.
3. A gift now to the Permanent Fund will continue to work in the areas of special interest that you may have designated as your special area of interest.

So, if you decide to make a contribution to the Permanent Fund of The Rotary Foundation, What benefits result from your contribution?

First: Many proudly share their contribution and are recognized. Are they being rewarded for making a contribution? Are they buying recognition? I don't believe they are buying recognition; I believe they are proud contributors to The Rotary Foundation and, in this example, to the Permanent Fund. A contribution of \$1000.00 to the Permanent Fund

makes a Rotarian a Benefactor of The Rotary Foundation; \$10,000.00 and beyond make you a member of the Bequest Society. Rotarians are proud of the designations, and I encourage YOU to be involved.

Second: As many have already identified, there are several methods of distributing property to become contributors to the Permanent Fund. While actual cash contributions are always welcome, several other avenues are available that do not require the distribution of cash. Such items include special provisions in your: a] will, b] life insurance, c] retirement accounts, d] charitable lead trusts and e] others. Become one of the 50% of Americans that take the initiative to plan ahead by contacting your attorney, trust officer, financial planner, etc.

Third: I am not sure how to address this issue, but I believe that each Rotarian, who actually develops a plan to place funding in the Permanent Fund of The Rotary Foundation will personally be proud to be a Rotarian and know that you will “make a difference in the World.”

I can only encourage you to consider a contribution to the Permanent Fund. You have to say, “Yes, I will make a difference.” If you or someone you know wishes to have a discussion, I would be pleased to discuss the possibilities with you before the end of the Rotary year (June 30, 2010). You should realize that the actual plan will need to be developed by a qualified financial planner. I/We can only discuss the options and help you address your concerns. Please contact me if you wish to discuss the Permanent Fund of The Rotary Foundation, or if you wish to develop a plan to address the needs in your club.

To contact me, please use the following:

PDG Keith R. Lape, Chair
 Permanent Fund
 20 Nob Hill Drive
 Jacksonville, IL 62650-2662

Telephone 217/473-6365

email:keithlape@verizon.net

Calendar for Rotary District 6460

2010

January 14 -16	Central States Rotary Youth Exchange Board Meeting	Schaumburg, IL	CSYE Committee, DG, DGE, DGN and Spouses
January 17 - 24	International Assembly	San Diego, CA	DGEs and Spouses
January 30	President's Summit, Pre-PETS and College of Governors Luncheon	Crowne Plaza Hotel, Springfield	Current Club Presidents and Presidents Elect, AG's, District Training Team, PDGs
February 20	District Team Training Seminar	Crown Plaza Hotel Springfield	District Leadership Team, AGs, District Officers, District Training Team
March 12 & 13	Land of Lincoln PETS	Effingham, IL	Club Presidents Elect, District Training Team, DGE, DGN, DG and PDGs, Spouses
April 10	District Assembly Membership Seminar Foundation Seminar Youth Seminar	Crowne Plaza Hotel, Springfield	Club President Elect, Club Officers, Club Committee Chairs, AGs, District Training Team & all Rotarians
April 16-18	RYLA	Bradley University Peoria	High School Students
June 20 – 23	RI Convention	Montreal, Canada	All Rotarians and Spouses
June 26	District Governor Installation	Crowne Plaza Hotel, Springfield	All Rotarians and Spouses
July 8-11	Central States Youth Exchange Summer Conference	Grand Rapids, MI	CSYE Outbound, Inbound, Rebound, Parents, DG, DGE
August 24-26	GETS, GNATS District Trainer Training Seminar	Nashville, TN	DGE, DGN, District Trainer and Spouses
August 26-28	Zone Institute	Nashville, TN	PDGs, DG, DGE, DGN and Spouses
October 29-30	District Conference And District Leadership Seminar	Hilton Springfield Hotel	All Rotarians and Spouses

2011

January 16 - 23	International Assembly	San Diego, CA	DGEs and Spouses
January 29	President's Summit, Pre-PETS and College of Governors Luncheon	Crowne Plaza Hotel, Springfield	Current Club Presidents and Presidents Elect, AG's, District Training Team, PDGs
To Be Determined	District Team Training Seminar	To Be Determined	District Leadership Team, AGs, District Officers, District Training Team
To Be Determined	President Elect Training Seminar	To Be Determined	Club Presidents Elect, District Training Team, DGE, DGN, DG and PDGs, Spouses
To Be Determined	District Assembly	To Be Determined	Club President Elect, Club Officers, Club Committee Chairs, AGs, District Training Team & all Rotarians

Rotary District 6460

Membership & Attendance - December, 2009



Rotary Club of...	Attendance			Membership			Start of Year	Present	Change
	Meetings Held #	This Month %	Rank	Year to Date %	Rank				
Abingdon	no report		#N/A	77.00	8	24	22	-2	
Aledo	2 of 3	72.00	11	84.83	2	6	6	0	
Alton-Godfrey	no report		#N/A	61.94	32	100	96	-4	
Benld	3 of 5	55.00	32	41.20	49	26	26	0	
Bethalto	no report		#N/A	72.20	14	33	36	3	
Bushnell	4 of 4	63.00	23	71.40	16	24	25	1	
Cambridge	3 of 5	50.00	36	69.25	18	22	22	0	
Canton	4 of 5	64.00	21	72.40	13	40	39	-1	
Carlinville	no report		#N/A	66.60	26	36	42	6	
Chillicothe	3 of 5	61.00	26	60.25	36	21	19	-2	
Collinsville	no report		#N/A	57.60	38	27	31	4	
Delavan	4 of 4	73.00	9	66.67	25	13	13	0	
East Alton	3 of 5	65.48	17	66.93	23	32	31	-1	
East Peoria	4 of 5	44.44	39	48.02	47	45	45	0	
Edwardsville	3 of 5	71.86	13	74.30	10	129	128	-1	
Farmington	3 of 5	47.33	38	48.65	46	34	35	1	
Galesburg	3 of 5	77.25	5	72.49	12	87	83	-4	
Galesburg Sunrise	4 of 5	75.00	6	76.00	9	40	40	0	
Galva	3 of 4	56.00	31	53.83	43	12	12	0	
Granite City	4 of 5	63.95	22	63.98	29	51	52	1	
Havana	4 of 4	67.20	14	68.16	20	32	30	-2	
Highland	5 of 5	83.61	3	78.77	5	75	75	0	
Jacksonville	no report		#N/A	56.11	40	111	114	3	
Jacksonville Sunrise	5 of 5	57.00	30	67.33	22	14	13	-1	
Jerseyville	1 of 3	66.00	16	55.67	41	43	42	-1	
Kewanee	5 of 5	72.60	10	71.87	15	47	46	-1	
Land of Goshen	5 of 5	82.68	4	74.25	11	73	73	0	
Macomb	4 of 4	60.00	27	61.33	33	91	88	-3	
Macomb Centennial Morning	3 of 5	95.00	1	88.83	1	36	40	4	
Manito-Forest City	no report		32	56.80	39	26	28	2	
Mason City	3 of 5	66.67	15	65.40	28	14	15	1	
Monmouth	3 of 4	52.65	35	55.56	42	79	82	3	
Morton	no report		#N/A	66.69	24	115	119	4	
Pekin	4 of 4	73.98	8	78.26	6	50	49	-1	
Peoria	no report		#N/A	46.00	48	251	246	-5	
Peoria North	3 of 5	62.80	25	57.68	37	179	174	-5	
Peoria Sunrise	3 of 5	92.00	2	79.40	4	10	13	3	
Petersburg	4 of 4	63.00	23	66.00	27	17	18	1	
Pittsfield	4 of 5	74.54	7	80.55	3	45	46	1	
Quincy	5 of 5	53.92	34	60.60	34	100	104	4	
Quincy East	no report		#N/A	62.88	31	22	22	0	
Rushville	3 of 5	65.30	18	68.72	19	28	24	-4	
Silver Creek	new club					0	20	20	
Springfield	2 of 4	65.13	19	63.57	30	88	89	1	
Springfield Midtown	no report		#N/A	71.24	17	25	25	0	
Springfield South	3 of 5	60.00	27	50.76	45	41	38	-3	
Springfield Sunrise	5 of 5	72.00	11	78.00	7	28	28	0	
Springfield Westside	3 of 5	50.00	36	50.85	44	20	20	0	
Washington	2 of 5	65.00	20	60.33	35	52	52	0	
Wood River	3 of 5	59.00	29	67.67	21	32	32	0	
				Totals		2546	2568	22	